

Barrier-free access

Schloss Biesdorf is handicapped-accessible and the bathrooms can be accessed by wheelchair.

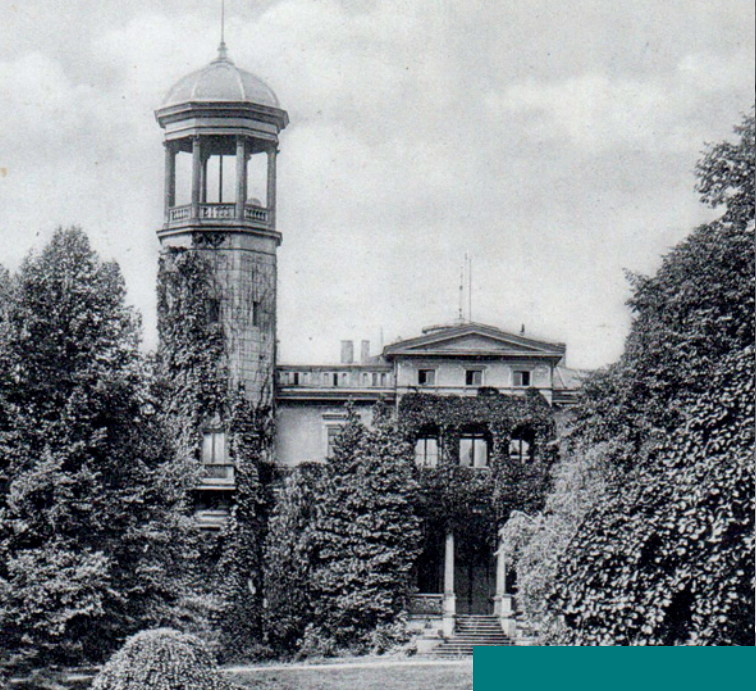
Opening hours

You can visit Schloss Biesdorf daily from 10:00 AM to 6:00 PM, Fridays even from 12:00 PM to 9:00 PM. Closing day is Tuesday. Please refer to [www.schlossbiesdorf.de](http://www.schlossbiesdorf.de) regarding changes and special opening hours.

Contact

Schloss Biesdorf  
Alt--Biesdorf 55  
12683 Berlin  
Tel. +49 . 30 . 516 56 77 90  
[www.schlossbiesdorf.de](http://www.schlossbiesdorf.de)

Photos: © Malte Nies, cequil – Grafik und Fotografie,  
Jan Frontzek, Bezirksmuseum Marzahn Hellersdorf



Schloss Biesdorf, eastern side, circa 1910



Schloss Biesdorf

The monument-appropriate reconstruction of Schloss Biesdorf was made possible by the District of Marzahn-Hellersdorf and with funds from the State of Berlin (European Regional Development Fund - ERDF / ERDF action "Cultural Investment Programme") and the financial support of the Stiftung Deutsche Klassenlotterie Berlin.



History

The ensemble of Schloss and Park Biesdorf with its striking villa in late classicist style – built to the plans of architect Heino Schmieden (1835 – 1913) – and the not quite ten-acre park were built in 1867/1868 on behalf of the Baron of Rùxleben.

After 1889, the Royal Garden Architect Albert Brodersen (1857 – 1930) redesigned the park, newly expanded to 35 acres, and equipped it with the most modern sports facilities of the day. Brodersen created a compelling distribution of light and shade in the park, formed a varied terrain and used the visual relationships in the surroundings skillfully. Again and again, the castle with its Mediterranean charm is used as an eye-catcher.

For many years, the castle is home to the von Siemens family. After the death of Georg Wilhelm von Siemens in 1919, the Castle is divided into apartments, and in 1920 a police station is established.

In 1927, the city of Berlin acquired the property with the corresponding extensive grounds and made it accessible to the public.

After 1933, the local chapters of the NSDAP and the „Amt für Volkswohlfahrt“ move in. An air-raid shelter is created and in April 1945, the beautiful building is destroyed completely – probably due to arson by the Nazis; the roof and ceilings collapse, parts of the façade cave in. In 1946/47, the Red Army carries out temporarily repairs of the castle and installs a makeshift roof over the ground floor.

Beginning in 1954, Schloss Biesdorf becomes a popular recreational site, 1959 a village club and later a district culture house (“Kreiskulturhaus“). A small stage is opened in the park in 1956. In 1979, the grounds are finally placed under monument protection and conservation reconstruction begins in 1984 with the restoration of the Park.







## Schloss Biesdorf

The stately villa – erected on the highest point of the Barnim Plateau – is a gem in Berlin’s memorial landscape that has only about 25 major castles, manor houses and palaces left. Schloss Biesdorf shows changing exhibitions free of charge as a municipal gallery of the Marzahn-Hellersdorf district and is a venue for events of all types – from concerts and guided tours, to artist exchanges, to lectures and literary formats. There is room enough, the castle has around 3,300 square meters of space. Only 20 minutes from the city center with its “own” U-Bahn and S-Bahn connection (U5 / S5), Schloss Biesdorf with its municipal gallery makes the most of the special urban situation of Marzahn-Hellersdorf, between single-family residences and prefab high-rises.

## Exhibitions

You can see changing exhibitions of contemporary art on relevant social themes in Schloss Biesdorf, often with a focus on the urban sphere and the district of Marzahn-Hellersdorf. The exhibitions are flanked by art projects with a similar outlook and the Commission for Art in Public Space has its offices at Schloss Biesdorf. The presentation of artistic heritage with a focus on the art of the GDR also extends to cooperative projects.

The experience in the castle is complemented by a permanent exhibition of the colorful history and unique architecture of the building.

## Labor M – Art Communication

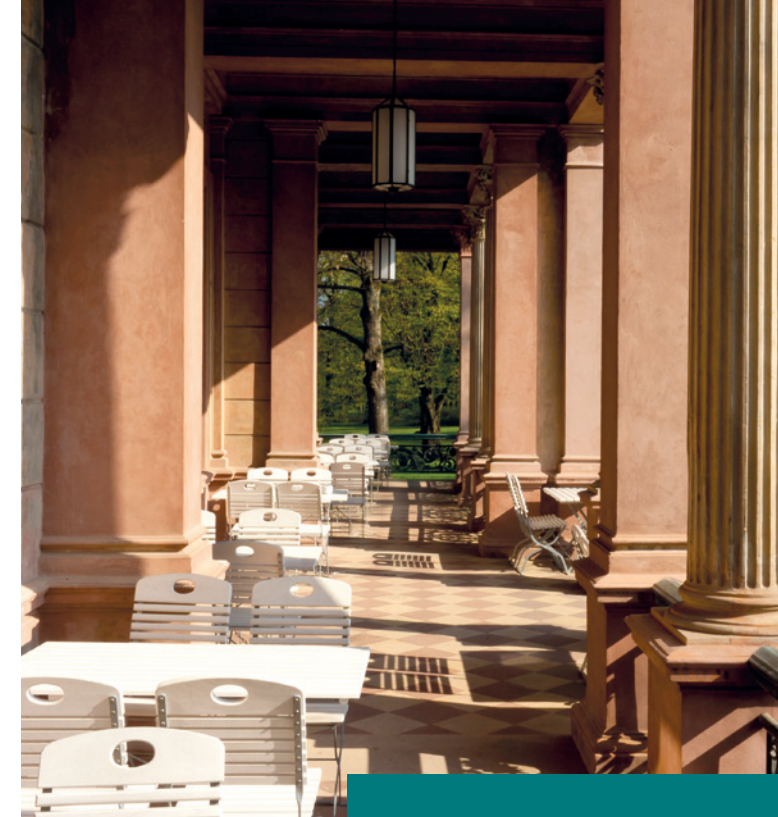
Several times a week, art communication flanks all exhibitions in Schloss Biesdorf. Labor M offers unconventional and experimental approaches to the artistic content of the exhibitions. In its own “lab space”, the workshop on the ground floor of the castle, it offers workshops for different ages and target groups. There are open activities for all those interested in the afternoon and on weekends.

## Park

Schloss Biesdorf is embedded in a beautiful public park. The English-style garden monument – a true gem, just like the castle – was designed by the renowned landscape architect Alfred Brodersen – with a pond, historic icehouse, curved paths, sprawling lawns and valuable old trees. Every year, the traditional Biesdorfer Parkbühne produces open-air concerts and a diverse stage program. The large park is an experience in any season – in spring, ancient crocus meadows blossom here, in summer it is pleasantly cool and shady under the tall trees, in the autumn everything is covered in red and gold and in winter time an enchanted silence sets the mood.

## Pleasure

In its historic setting, the Café Schloss Biesdorf will indulge you with fine cakes and fresh coffee specialties, in its luminous rooms – designed by architect Mara Pinardi – or on the large sun terrace. If you would like to hold your event at the café of the castle with its splendid terraces, inquire directly on site or send the café an e-mail.



## Diversity and Civic Engagement

The events of the Volkshochschule education center, music school and youth art school complement the main focus of Schloss Biesdorf as an art venue. Offers from our cultural partners focusing on the themes of the house – art, architecture and history – find a space at Schloss Biesdorf as well.

Schloss Biesdorf is a house for the community! Your ideas are important to us. Feel free to approach us on site or by e-mail at: [info@schlossbiesdorf.de](mailto:info@schlossbiesdorf.de).



Imprint: Bezirksamt Marzahn-Hellersdorf von Berlin  
Fachbereich Kultur, Rieser Str. 94, 12627 Berlin  
Contact: Jan Frontzek (Section Head)  
All information subject to change. As of 01/2019